

2002 Rialta® by Winnebago Industries®



The 2002 Rialta.
With a new 201-hp V6,
it's quite impressive as
you travel down the road.

And with all these features, it's also pretty fantastic once you've parked.



Appliances included.

Rialta's intelligently designed galley comes fully equipped with brand-name appliances, including a stove, refrigerator and microwave. Major appliances are secured with steel tie-downs for added safety.



Another strong point.

Our exclusive interlocking joint system connects the roof, floor and walls for a durable, better-sealed, quieter body. Rialta's steel floor is electro-deposition coated and undercoated to resist corrosion. It's one tough motor home.

Drive safely.

The Rialta features the protection of a driver-side and front passenger-side airbag Supplemental Restraint System (SRS).



Feel the warmth.

Unlike conversion vans, the Rialta comes with a furnace to keep you comfortable on chilly nights.

See here.

Rialta's low-mounted exterior mirrors are remote controlled and feature heated electric defrost, for added convenience.

Great moves.

You'll find Rialta's combination of front-wheel drive, a more powerful engine and independent torsion-bar suspension gives it superior maneuverability and handling.



Cut the cord.

Some of the world's most beautiful places don't have places to plug in. But that doesn't matter to a Rialta owner, thanks to the available Onan® MicroLite™ KVL 2.8 kW generator.



No slip-ups.

Rialta features non-skid surfaces on steps and running boards, for secure footing.

Wheel nice.

Any way you look at it, the Rialta's a beautiful vehicle. Especially when equipped with the newly available 16" aluminum wheels. Sporty, new low-profile tires come standard.



Keep it clean.

Muddy boots? Messy gear? Use Rialta's available exterior wash station and cleanups are a snap.



Very cool.

The 110-volt, roof-mounted air conditioner means you relax in comfort even on hot days. And thanks to Rialta's dual automotive air conditioning system in the cockpit and cabin, you'll stay cool and comfortable when you're on the move, too.



What a great view.

You'll appreciate the enhanced visibility provided by Rialta's rear window defogger/defroster and wiper/washer — especially when parking, changing lanes or backing out of a driveway.



Wide open spaces.

Another example of Rialta's remarkable use of space: a lighted, oversized rear storage compartment for packing larger items. A power cord inside this compartment makes for quick hookups, too.

You've got pull.

A trailer hitch plus a powerful V6 engine gives Rialta 2,000 pounds of towing capacity.



Get into hot water.

As a full-featured Class C motor home, the Rialta comes with a 110-volt electric water heater. For even more convenience, it incorporates Motoraid, which uses engine heat when driving to immediately provide hot water upon arrival at your destination.



There is a certain pleasure in owning something that is superbly designed. And you can hear it in a Rialta owner's voice.

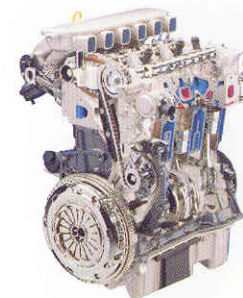
It's a mixture of pride, satisfaction and downright enthusiasm as they show you around the vehicle.

"It's amazing how this thing works," they say. Or, "Let me show you this neat feature."

You see, we've packed a whole lot of our very best thinking into the Rialta.

Even from the outside, it differs markedly from other motor homes. Measuring in at a very maneuverable 22 feet, the Rialta's sleek, aerodynamic lines and softly rounded contours please the eye even as they reduce drag, improve mileage and help quiet the interior.

But don't let the Rialta's size fool you. Inside, you'll find it has plenty of room for comfortable living. And, as a full-featured Class C motor home, it's loaded with the same kind of creature comforts and conveniences found in vehicles nearly twice its size.



Plenty of Vroom.

This year's Rialta features a new V6 engine that produces 201 horsepower. This 44% boost makes the already zippy Rialta even more fun to drive, especially when the hills get steep or the curves get deep.



Grand entrance (and exit).
Rialta features a low entrance step, so stepping aboard feels like entering a home,

not climbing into a truck. Rialta's passenger- and driver-side doors are also easy in, easy out.



Chill out.

Here's another cool Rialta innovation: Operated from its own control panel, the auxiliary automotive air conditioning system helps keep things comfortable throughout the coach. Adjustable overhead vents allow you to direct cool air for maximum comfort.



Rialta shines.
Interior spaces get plenty of natural light through a large, translucent skylight located above the galley. At night (or when the sun isn't shining), you'll appreciate clever and abundant lighting throughout Rialta.



Dashing, isn't it?

Slide into position behind Rialta's steering wheel and you'll instantly hear the call of the open road. And why not? You'll feel comfortable here, with controls within easy reach and analog instrumentation that's easy to read. The Sony® AM/FM stereo cassette or available Sony AM/FM stereo CD player completes the driving experience.



Best seats in the house.

Sit back. Relax. Enjoy Rialta's ergonomic seating (shown here in available gray leather). Cloth or leather, it's not only stylish, it also offers additional support where it's needed as well — especially in the critical lumbar area. Driver and passenger seats incorporate adjustable armrests, and multi-adjustable recline and swivel/slide features.

An interior designed as cleverly as a Swiss Army knife.



Rialta's bathroom takes up next to no space...

From the outside, the Rialta is quite compact. Inside, its clever design allows it to do everything a full-size motor home can do. And it does it all, brilliantly.

Take the bathroom, for instance. It's constructed with telescoping walls, so it takes up next to no space. This unique system

incorporates a toilet, fold-down sink, mirrored medicine cabinet, two towel bars — and with the walls extended, there's even room for a shower!

You'll find the Rialta full of such surprises: comfortable, spacious seating and dining areas; ample



...At the touch of a button and with a gentle pull, its walls telescope outward, creating additional space...



...Ample room for a toilet, a fold-down sink, medicine chest and towel bars, even a shower!

storage areas (including a large, lighted wardrobe and/or spacious shirt closets); a fully functional galley; and much, much more. Because at Winnebago Industries, we believe that your motor home experience should be big-time fun. No matter what size coach you prefer to drive.

Nimble. Agile. Maneuverable. Not the adjectives you might associate with a motor home.

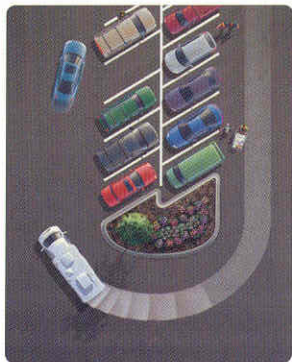
The Rialta is full of innovation and pleasant surprises. But perhaps the biggest surprise is just how brilliantly it handles and drives.

Let's talk turning radius: Rialta's is very tight, which means it can turn circles around other Class A and Class C motor homes.

In fact, Rialta's combination of size, power, front-wheel drive and independent torsion-bar suspension means that when you're behind the wheel, it feels extremely maneuverable and responsive.

So you can cruise through highway traffic. Breeze up hills. Maneuver through tight city traffic. And then swing in and park easily.

In short, Rialta will let you boldly go wherever your adventures take you. Then take care of you once you get there.



Do a good turn daily.

Swinging into a parking lot is no problem with a Rialta. It feels more like driving a car than a motor home. You'll appreciate its maneuverability when wheeling through a campground or negotiating traffic.

Model 22QD

Seating for four up front, a rear dinette, and two sleeping areas.



Breakfast and bed.

Wonderfully well lit by Rialta's extra-large rear window, the dinette provides a comfortable dining and multi-use area, and converts easily into a large sleeping area about the size of a double bed. The bedding shelf above the dinette is a great place for pillows, blankets and the available videocassette player.



A place for everything.
Conveniently store hanging clothes in this lighted wardrobe. The carpeted floor is perfect for shoes and boots.



Full-featured galley.

It has everything you need: two-burner, recessed range; microwave oven; refrigerator; and sink. A flip-up countertop extension and the drop-in recessed sink cover gives you added work space.



"Z" place to be.

The oversized companion seats, located behind the cab area, provide comfortable seating with their multi-position recline feature. They also fold flat and join together to form yet another sleeping area.

Model 22FD Standard and 22FD Optional

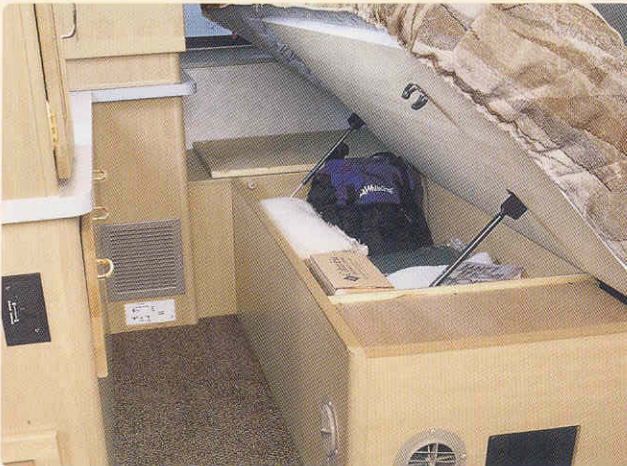
Choose from the standard rear double or optional twin bed sleeping configuration. These floorplans also feature a fully equipped front galley.



Optional: twin beds. Ultra-comfortable Serta® mattresses provide a great night's rest. Dual shirt closets plus overhead cabinetry and a single-drawer nightstand make for plenty of storage space. A removable pedestal table (not shown) adds functionality to this area.

Standard: double bed.

A double-sized Serta mattress provides the ultimate in sleeping comfort in a bed with room for two. The 3/4-length wardrobe with carpeted floor, roomy shirt closet and overhead cabinetry provide abundant storage.



Bed. Room.

Both FD models feature underbed storage areas for convenient storage of bulky or oversized items. (Double-bed storage is shown. Available twin beds feature storage under the passenger-side bed.)



Vanity is good.

Across from the FD Standard's double bed, you'll find an impressive vanity with a large countertop and multiple storage areas, including a wardrobe, shirt closet, overhead cabinets and large drawers. The vanity also incorporates a pull-out TV shelf that tucks away when not in use. (Television not included.)



It really cooks.

The galley is complete and fully functional. There's a two-burner, recessed range; microwave oven; refrigerator; sink; and roomy countertop. A pull-up table between the comfortable lounge chair and front passenger seat is perfect for mealtime, a game of checkers or as a place to work on your laptop computer.

Model 22HD

An impressive front galley, larger refrigerator/freezer and the functionality of a rear dinette/sleeping area.



Eat. Drink. Relax.

The spacious dinette with seating for four receives plenty of natural light from Rialta's extra-large rear window. Added conveniences like the stowable table, cupholders and rear countertop add versatility.



Chef's choice.

Home is where the hearth is. So we gave the HD's galley some extra touches, such as a high-output third burner on the range, an available full-feature oven, plus microwave and sink.



Hey, nice convertible.

The dinette converts easily into a large sleeping area about the size of a double bed. Just stow the table into its retracted position in the back wall and fold down the dinette seats. Blankets and pillows can be stored up above on the overhead bedding shelf when not in use. (Television not included.)

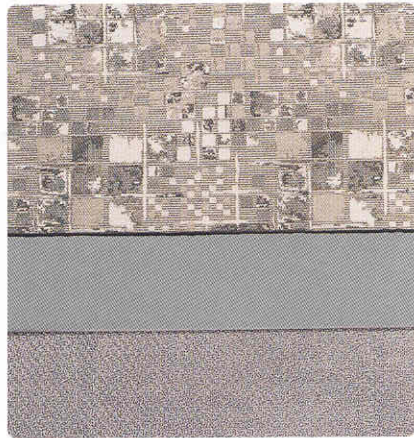


The big chill.

The HD also features a large-capacity refrigerator/freezer with two drawers beneath, plus a large counter on top. (Television not included.)

Interior Choices

Rialta's interior color schemes are designed to stay looking great and wearing well for years to come.



Gray Flannel



Laurel Mist

Exterior Valance Choices

Accent Rialta's smooth, aerodynamic lines through your choice of exterior colors.



Sahara Gray Metallic
(Standard wheel covers shown.)



Wintergreen Metallic
(Available aluminum wheels shown.)

It's the little things that make a difference. So we make sure we get those right, too.

There's nothing jury-rigged or haphazard about Rialta because, unlike Class B conversion vans, it isn't adapted from another vehicle.

It's engineered from the ground up and constructed to the same strict standards as larger Winnebago Industries motor homes.



As you look over Rialta, notice its smooth lines and flush-mounted headlamps and turn indicators, all of which contribute to Rialta's sleek look and superior mileage.

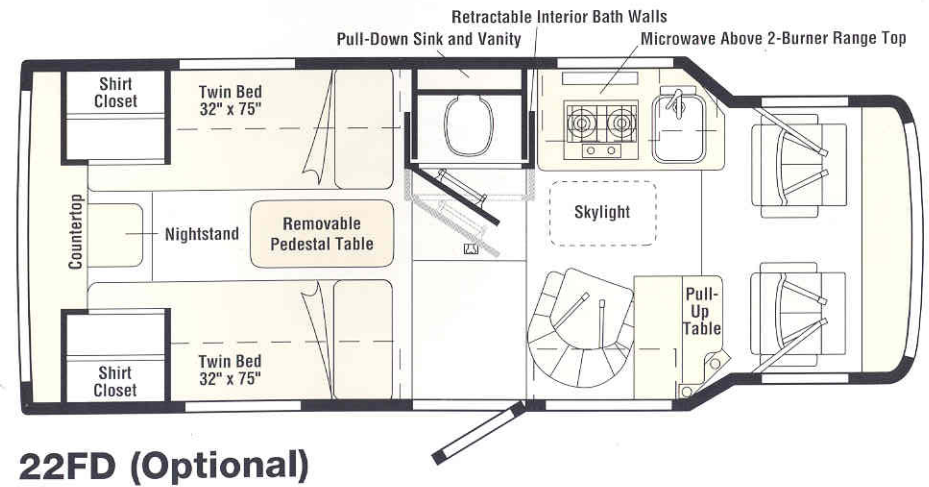
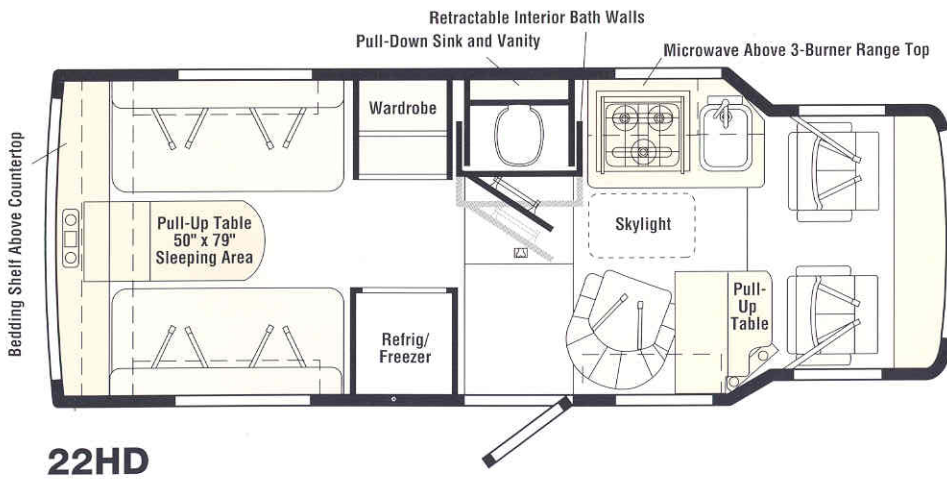
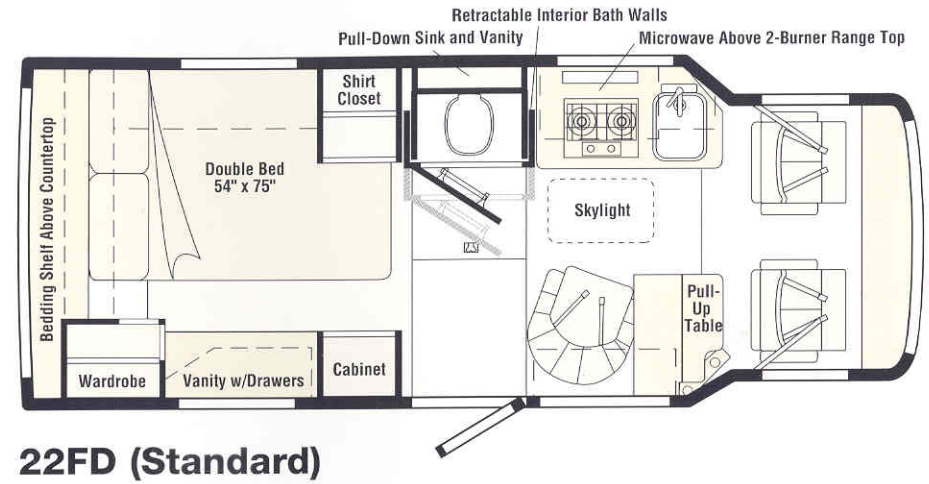
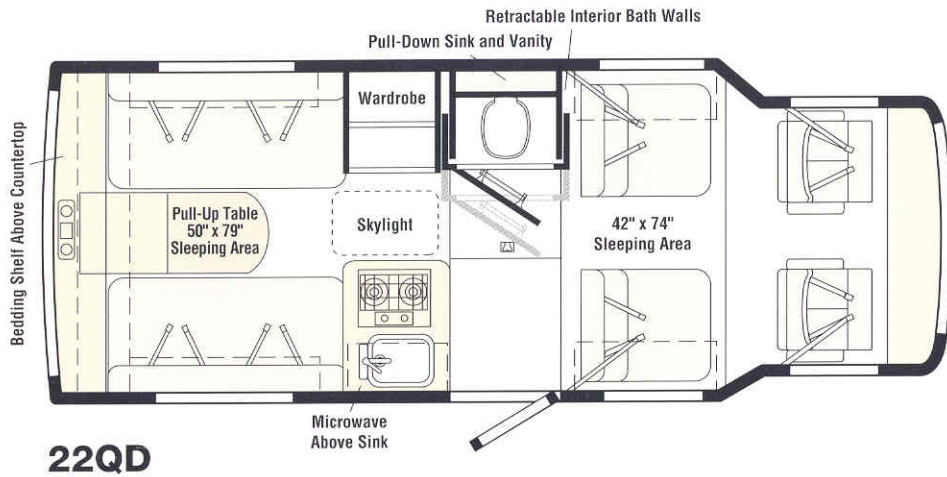
Easy on the pocket.
When not in use, the key folds into its handle, so it's easier on your pants pockets. The keyless entry remote is built right into the handle, eliminating the need for a separate keychain transmitter.

Check out the fit and finish throughout. Rialta's interior appointments are designed to operate smoothly and maintain their attractive appearance for years to come.

Notice the cabinet hardware, how it's large enough to use easily, yet is attractive and unobtrusive.

It's a funny thing. While a motor home may well be one of the bigger vehicles on the road, it's the little things that make traveling in one a pleasure. At Winnebago Industries, we do everything we can to make everything just right. Big and small.

You'll see innovation from the top down: Floorplans.



The difference is in the details: Specifications.

	22QD	22FD	22HD
2002 Rialta			
Length	21'8"	21'8"	21'8"
Exterior Height w/AC*	8'6"	8'6"	8'7"
Exterior Width	7'4"	7'4"	7'4"
Interior Height (Maximum)	6'2"	6'2"	6'2"
Interior Width	6'10.5"	6'10.5"	6'10.5"
Freshwater Capacity w/Heater	20 gal.	20 gal.	20 gal.
Holding Tank Capacity - Black/Gray	13/9 gal.	13/6 gal.	13/7 gal.
LP Capacity ◊	7 gal.	7 gal.	7 gal.
Fuel Capacity	21 gal.	21 gal.	21 gal.
GVWR	7,275 lbs.	7,275 lbs.	7,275 lbs.
GCWR	9,275 lbs.	9,275 lbs.	9,275 lbs.
Wheelbase	152"	152"	152"

S Standard
O Optional

	22QD	22FD	22HD
Automotive/Chassis			
Chassis - Volkswagen VR6 2.8L fuel-injected gas engine, 201-hp, 4-speed electronically controlled automatic transmission, 280 amp battery/150 amp alternator, on-board vapor recovery system, 16" Tires and Wheels, Auxiliary Rear Air Springs, Spare Tire, 4-wheel disc brakes, Tire Tools jack, jack handle and lug wrench, Trailer Hitch 2000# drawbar/100# maximum vertical tongue weight and wiring, Wheel Covers	S	S	S
Stylized Aluminum Wheels (4)	O	O	O
Cab Area and Driver Conveniences			
Beverage Tray w/cupholders, Cab Seats w/seat belts 3-point shoulder and lap w/retractors, adjustable armrests, lumbar support, multi-adjustable swivel/slide/recline, fabric w/vinyl surround, headrest, Cigarette Lighter/12-Volt Electrical Supply, Cruise Control, Auxiliary Start Circuit, Dual Battery Charge Control (Automatic), Folding Ignition Key, Interior Adjustable Rearview Mirror, Interior Remote Hood Release, Map Lights (2), Power Assist Steering, Power Door Locks and Windows, Rear Window w/wiper/washer and defogger/defroster, Rubber Driver and Passenger Floor Mats, Sunvisors w/mirrors and lights (2), Trim Panels driver door w/lockable storage	S	S	S
Cab Seats leather insert w/vinyl surround	O	O	O
Entertainment			
Radio (Cab) deluxe AM/FM stereo cassette, Sony, speakers (6), TV Antenna (amplified), receptacle(s), interior jack, coax wiring, cable input	S	S	S
Radio (Cab) AM/FM stereo CD, Sony	O	O	O
9" 12-Volt Color TV* w/remote,	O		
VCP* (video cassette player)	O		
Deluxe Sound System* 4 deluxe speakers, subwoofer	O	O	O
TV Shelf* (NA w/twin bed option)	S		

S Standard
O Optional

	22QD	22FD	22HD
Interior			
Bedding Shelf,* Carpeted Floor Mat entrance door, Ceiling Lights incandescent, DC Receptacle, Front Wraparound Curtain, Headliner molded ABS, Micro-pleated Shades, Skylight, Textured Fabric Ceiling, Wardrobe Cabinet* carpeted floor, clothes rod, light	S	S	S
Convenience Tray cupholders and storage tray, backwall	S	S	
Leather-Faced Seat Upgrade cab and coach	O	O	O
Micro-Mini Blind galley area	S	S	
Cabinetry			
Gray Contemporary Euro-styled ABS doors	S		
Washed Maple Woodgrain stile-and-rail doors	S	S	
Countertops			
Laminate Countertops w/color-coordinated edging	S	S	S
Floorcovering			
Textured Carpet w/Pad	S	S	S
Furniture			
Companion Seats fabric w/vinyl surround	S		
Dinette fabric w/vinyl surround	S	S	
Lounge Chair fabric, Cabinet w/fold-up table and magazine rack	S	S	
Galley			
Microwave Oven touch control,	S	S	S
Powered Ventilator Fan galley/bath, Range Cover, Single-control Faucet, Single Stainless Steel Sink sink cover (countertop material)			
Flip-up Countertop Extension	S		
Range Top 3-burner, Magic Chef®	S		
Range 3-burner w/oven, Magic Chef	O		
Range Top 2-burner, recessed	S	S	
Refrigerator single-door, Norcold®	S	S	
Refrigerator single-door, high-altitude	O	O	
Refrigerator/Freezer single-door, Norcold	S		
Bath			
Dual-control Lavatory Faucet, Expandable Cabinet, Fold-down Sink, Fold-down Vanity Shelf, Medicine Cabinet w/sliding mirror doors, Shower Package shower curtain and snaps, shower pan w/power drain, lavatory faucet w/flexible shower head, Tissue Holder, Toilet w/foot pedal, Towel Bars (2) located on bath door	S	S	S

S Standard
O Optional

	22QD	22FD	22HD
Bedroom			
Double Bed w/fitted bedspread and pillow shams, Bedding Shelf, Decorative Wall Lamp, Vanity Cabinet w/Drawers, Shirt Closet, Overhead Cabinets, Wardrobe Cabinet, Serta® Mattress	S		
Twin Beds w/fitted bedspreads and pillow shams, Decorative Wall Lamps, Shirt Closets, Nightstand w/drawer, Overhead Cabinets, Removable Pedestal Table, Serta Mattress	O		
Exterior			
AC Duplex Receptacle, Entrance Door main w/screen door, deadbolt lock, Fiberglass Running Boards w/front wheel lips, Graphics Package Wintergreen Metallic or Sahara Gray Metallic, Fuel-fill Door w/locking cap, Mirrors electric remote w/defrost, Mudflaps front and rear, Porch Light w/interior switch, Rear Storage Compartment trunk, lock, power cord, light, Transition Panels, Undercoating coach only	S	S	S
Undercoating cab only	O	O	O
Systems			
4-Gallon Water Heater 110-volt w/motoraid and rear auto heater, 30-Amp Power Cord, AC/DC Electrical Distribution System AC/DC load center combination, 45-amp converter/charger, Automotive Heater/Air Conditioner, Auxiliary Automotive Air Conditioner w/4 outlets, City Water Hookup, Generator Prep Kit, LP Tank permanent mount w/gauge, Monitor Panel wall mount, battery condition gauge,* generator start/stop switch, holding tank levels, LP tank level, water pump switch, water tank level, Remote Automatic Dual Battery Charge Control 120 VAC/120 VDC, Roof Air Conditioner 7,100 BTU, Sewer Hose, Water Heater Winterization Bypass Valve, Water Pump demand, Water System Drain, Water Tank Fill w/locking door	S	S	S
Exterior Wash Station w/pump switch	O	O	O
Furnace 17,000 BTU, Suburban®, low-profile	S		
Furnace 19,000 BTU, Suburban, low-profile	S	S	
Generator 2,800 watt, Onan® MicroLite™, gas, hourmeter	O	O	O
Safety			
3-Point Cab Seat Belts, 10 B.C. Fire Extinguisher, Bumpers front and rear, Carbon Monoxide Detector/Alarm, Daytime Running Lamps, Driver and Passenger Airbags, Escape Window, Ground Fault Interrupter, High-mount Rear Brake Light, LPG Leak Detector/Alarm, Lap Belts In Selected Areas, Smoke Detector/Alarm	S	S	S
Warranty			
2-Year/24,000-Mile Basic Warranty on Coach Body from Winnebago Industries**	S	S	S
2-Year/24,000-Mile Basic Warranty on Chassis/Cab from Volkswagen of America, Inc.**			
5-Year/50,000-Mile Basic Warranty on Powertrain from Volkswagen of America, Inc.**			

*The height of each model is based on the curb weight of a typically equipped unit on the standard chassis. The actual height of your vehicle may vary by as much as 2" depending on chassis or equipment variations.

◊ Capacities shown are tank manufacturer's listed water capacity (W.C.). Actual filled LP capacity is 80% of listing due to safety shut-off required on tank.

*Not all items available in combinations. See dealer for details. **See your dealer for complete warranty documentation information.

Winnebago Industries' continuing program of product improvement makes specifications, equipment, model availability and prices subject to change without notice.

More protection for your peace of mind.

Warranty Protection — The Rialta comes with one of the most comprehensive warranties in the industry. The coach body of Rialta is covered by Winnebago Industries' 2-year/24,000-mile warranty, while Volkswagen of America, Inc. covers the chassis/cab for 2 years/24,000 miles and the powertrain for 5 years/50,000 miles.

Premium Roadside Assistance Program — Every new Winnebago



Our Premium Roadside Assistance Program covers all our 2002 motor homes.

Industries motor home comes with a one-year membership in our Premium Roadside Assistance Program. This 24-hour nationwide assistance plan covers emergency dispatching for road service and towing, service questions and recommendations, plus other free services, including jump starts, tire changing, fuel delivery and lockout assistance.

TripSaver Program — Mechanical emergency while on vacation? Just go to your nearest Winnebago Industries dealer.

We guarantee all qualifying, in-stock warranty parts will be air shipped within 24 hours. A part that is not in stock will be expediently manufactured and shipped air freight.



Rialta

Built proudly by
WINNEBAGO
INDUSTRIES

© 2001 Winnebago Industries, Inc., Forest City, IA 50436. Printed in USA.

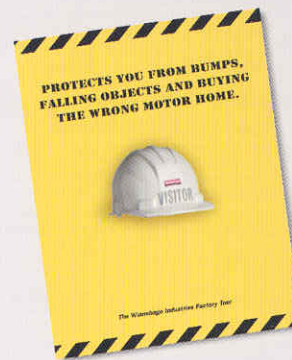
Seat belts are your most important hookup. Always buckle up.

Visit us at www.winnebagoind.com

Winnebago-Itasca Travelers (WIT) Club — Winnebago Industries vehicle owners are eligible to enroll in the Winnebago-Itasca Travelers (WIT) Club. As a member, you'll enjoy many benefits, including mail forwarding, trip planning, rallies, caravans and more.



Protect yourself from buying the wrong motor home.



One of the best ways to find out what kind of motor home you're buying is to put on a hard hat and watch how it's put together. Which is why we place a lot of emphasis here in Forest City, Iowa, on the Winnebago Industries factory tour. We've developed so many ways to make motor homes better, a firsthand look at the factory tends to be a very educational and persuasive experience.

Once inside, you're introduced to concepts such as on-site manufacturing (a rarity in our business), our rigorous testing process and much more. Buying a motor home is a big decision. But the more you know about how we build them, the more comfortable you'll be choosing the right one for your needs. Unable to come to the factory? Ask for this free guide next time you visit your Winnebago Industries dealer.